

## SKU:9409

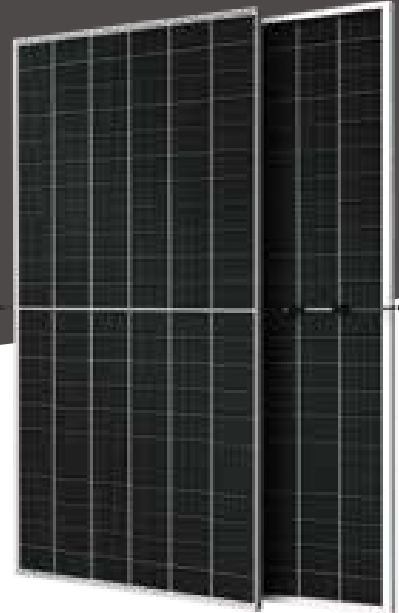
## PC: FV730-A1

**POWER RANGE**

**695W~730W**

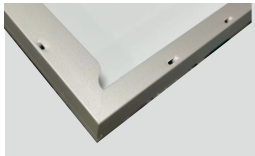
**CELL SIZE**

**182\*91mm**



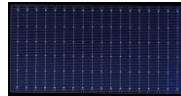
### JUNCTION BOX

Waterproof protection grade: IP68  
Safety Level: Class II  
Maximum System Voltage: 1500V  
outstanding waterproof level -  
Effectively resist harsh environments



### Frame

Strong mechanical load  
resistance up to 5400Pa  
Anodic oxidation layer resistant to  
chemical corrosion available  
in silver and black



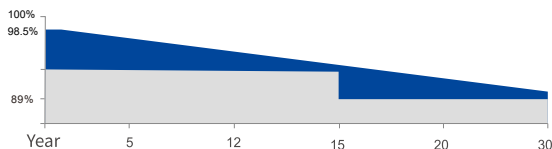
18BB

## QUALIFICATIONS AND CERTIFICATES



· IEC61215 / · IEC61730

## WARRANTY



**15 YEARS** Guarantee on product material and workmanship

**30 YEARS** Linear Power output warranty



### SMBB Technology

Better light trapping and current collection to improve module power output and reliability.



### PID Resistance

Excellent Anti-PID performance guarantee via optimized mass-production process and materials control.



### Higher Power Output

Module power increases 5-25% generally, bringing significantly lower LCOE and higher IRR.



### Enhanced Mechanical Load

Certified to withstand: wind load (2400 Pascal) and snow load (5400 Pascal).

# FV730-A1

## ELECTRICAL DATA(STC)

Model Type	695-36V	700-36V	705-36V	710-36V	715-36V	720-36V	725-36V	730-36V
Peak Power(Pmax)	695.00	700.00	705.00	710.00	715.00	720.00	725.00	730.00
Maximum Power Voltage(Vmp)	43.02	43.21	43.40	43.53	43.66	43.79	43.92	44.05
Maximum Power Current(Imp)	16.18	16.23	16.27	16.34	16.41	16.48	16.55	16.62
Open Circuit Voltage(Voc)	49.10±3%	49.17±3%	49.24±3%	49.30±3%	49.36±3%	49.42±3%	49.48±3%	49.54±3%
Short Circuit Current(Isc)	17.22±3%	17.31±3%	17.39±3%	17.47±3%	17.55±3%	17.63±3%	17.71±3%	17.79±3%
Module Efficiency( % )	22.37	22.53	22.70	22.85	23.02	23.18	23.34	23.50

\*STC:irradiance 1000W/m<sup>2</sup>, AM1.5, and cell temperature of 25°C

## ELECTRICAL DATA(NMOT)

Model Type	695-36V	700-36V	705-36V	710-36V	715-36V	720-36V	725-36V	730-36V
Peak Power(Pmax)	583.00	588.00	592.00	597.00	602.00	607.00	612.00	617.00
Maximum Power Voltage(Vmp)	40.82	41.01	41.20	41.33	41.46	41.59	41.72	41.85
Maximum Power Current(Imp)	14.28	14.33	14.37	14.44	14.51	14.58	14.65	14.72
Open Circuit Voltage(Voc)	46.50±3%	46.57±3%	46.64±3%	46.70±3%	46.76±3%	46.82±3%	46.88±3%	46.94±3%
Short Circuit Current(Isc)	15.22±3%	15.31±3%	15.39±3%	15.47±3%	15.55±3%	15.63±3%	15.71±3%	15.79±3%

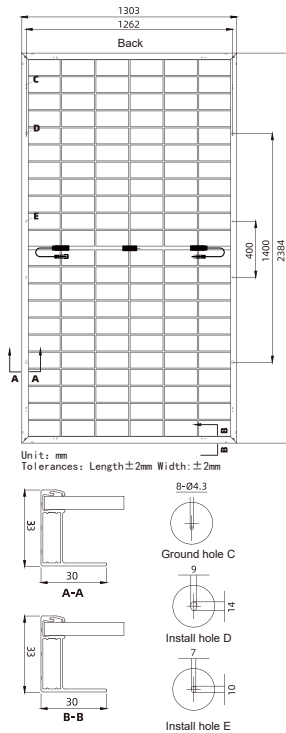
\*NMOT: irradiance 800 W/m<sup>2</sup>, AM 1.5, ambient temperature 20°C, wind speed 1 m/s

## ELECTRICAL DATA(BNPI)

Model Type	695-36V	700-36V	705-36V	710-36V	715-36V	720-36V	725-36V	730-36V
Peak Power(Pmax)	765.00	770.00	775.00	780.00	785.00	790.00	795.00	800.00
Maximum Power Voltage(Vmp)	43.02	43.21	43.40	43.53	43.66	43.79	43.92	44.05
Maximum Power Current(Imp)	17.85	17.90	17.95	18.02	18.09	18.16	18.23	18.30
Open Circuit Voltage(Voc)	49.10±3%	49.17±3%	49.24±3%	49.30±3%	49.36±3%	49.42±3%	49.48±3%	49.54±3%
Short Circuit Current(Isc)	18.99±3%	19.09±3%	19.18±3%	19.27±3%	19.36±3%	19.45±3%	19.54±3%	19.63±3%

\*BNPI:back irradiance 135W/m<sup>2</sup>, AM1.5, and cell temperature of 25°C

## PV DRAWINGS



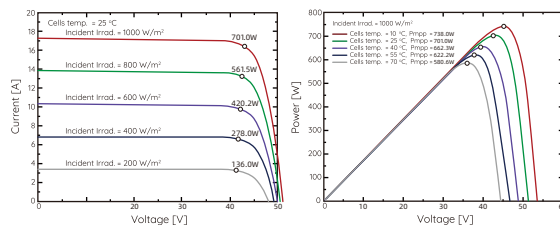
## TEMPERATURE & MAXIMUM RATING

Maximum System Voltage (V)	1500 V
Maximum Series Fuse Rating (A)	35 A
Power Tolerance	0~+3 W
Pmax Temperature Coefficients (W/°C)	-0.223 %/°C
Voc Temperature Coefficients (V/°C)	-0.243 %/°C
Isc Temperature Coefficients (A/°C)	+0.026 %/°C
NMOT Nominal Module Operating Temperature (°C)	43±3 °C
Operating and Storage Temperature (°C)	-40~+85 °C

## MECHANICAL CHARACTERISTICS

Cell Type	210*105 N Type HJT
No. of Cells	132 (12*11)
Dimensions	2384*1303*33mm
Weight	38.50kg
Front Glass	Solar glass, 2.0mm, with anti-reflective surface
Back Glass	Solar glass, 2.0mm
Frame	Anodized Aluminium
Junction box	IP67/IP68 3diodes
Output cables	4mm <sup>2</sup> cable 35cm (Including MC4 connector)
MaxWind Load/Snow Load	2400Pa/5400Pa

## IV CURVE



## PACKING WAY

40HQ container  
18Packages/594pcs

Bulgaria, 1784 Sofia  
Mladost 1, bl. 144, Ground Floor  
Phone: +359 2 988 45 72; +359 2 988 45 89  
Mobile: +359 882527441; +359 886016100;