

EU Type Examination Certificate Number: 0120/SGS0151

# Zhejiang Eastron Electronic Co.,Ltd.

No. 1369, Chengnan Road  
Jiaxing  
Zhejiang  
China  
314001

Instrument Identification:  
**SDM630 Series**

**Polyphase, Active Import / Export (kWh), Multifunction, Indoor, Electricity Meter**

Instrument Traceable Number  
**0120/SGS0151**

has been assessed and certified as meeting the requirements of

## EU Directive 2014/32/EU on Measuring Instruments Annex II, Module B

It is certified that the manufacturer's technical design and specimen for the above instrument has been examined and, based on the evidence submitted, it is considered that the instrument conforms to the requirements of Annex V of EU Directive 2014/32/EU

This certificate must be used in conjunction with a certificate covering the product verification as required in Annex II, Module D or Annex II, Module F

This certificate is valid until to 5<sup>th</sup> January 2025  
Issue 3

Certification is based on report number(s): SHES130800321501 dated 26<sup>th</sup> December 2014  
EMA198278/1 dated 26<sup>th</sup> December 2014 EMA198278/2 dated 21<sup>st</sup> June 2016  
EMA288737/2 dated 1<sup>st</sup> April 2021 EMA29036/1 dated 26<sup>th</sup> June 2021  
EMA293203/1 dated 4<sup>th</sup> August 2021, EMA296034/1 Dated 26<sup>th</sup> November 2021  
EMA302428 dated 20<sup>th</sup> July 2022, EMA302428/TR50579/1 dated 26<sup>th</sup> May 2022

Authorised Signature



Tuomas Hänninen

SGS Fimko OY, Notified Body 0598  
Takomotie 8, FI-00380 Helsinki, Finland  
t +358 9 6963 61 [www.sgs.fi](http://www.sgs.fi)





EU-Type Examination Certificate Number:

**0120/SGS0151**

Issue Number: 3

Dated: 21<sup>st</sup> July 2022

**1. Technical Data**

<b>Manufacturer</b>	Zhejiang Eastron Electronic Co.,Ltd.
<b>Meter Types Version 1 &amp; Version 2</b>	SDM630-Standard, SDM630-MT, SDM630-MODBUS
<b>Meter Types Version 3</b>	SDM630-Mbus, SDM630-Pulse, SDM630-2T, SDM630-DI, SDM630Mbus-2T, SDM630-MODBUS V2.2 SDM630WiFi SDM630-Modbus V3 and the SDM630M -DI V3, SDM630-EV
<b>Voltage Rating (Un)</b>	3x230/400V
<b>Current Rating (Imin – Iref (Imax))</b>	0.5-10(100)A & 0.5-10(80)A
<b>Frequency (Fn)</b>	50Hz
<b>Active Accuracy Class (kWh) V1 &amp; V2</b>	A or B (kWh)
<b>Active Accuracy Class (kWh) V3</b>	B or C (kWh)
<b>Type of circuit</b>	3p4w, 3p3w, 1p2w
<b>Temperature Range</b>	-40°C to +70°C
<b>Software Version No's. V1 &amp; V2</b>	SDM630-Standard, SDM630-MT, SDM630-Modbus, SDM630-Mbus, SDM630-Pulse : V1.3 SDM630-2T: V1.4 SDM630-DI: V1.5 SDM630Mbus-2T: V1.6 SDM630-Modbus V2.2: V1.3 SDM630 WiFi: V1.1
<b>Checksum No's.</b>	SDM630-Standard, SDM630-MT, SDM630-Modbus, SDM630-Pulse: 0x0000AFF9 SDM630-Mbus,: 0x00003C02 SDM630-2T: 0x0009DF4 SDM630-DI: 0x00000A31 SDM630Mbus-2T: 0x000075BC SDM630-Modbus V2.2: 0x00003C02 SDM630 WiFi: 0x007AD85C
<b>Identification Location</b>	Nameplate & LCD
<b>Software Version No's. V3</b>	SDM630Modbus V3: V1.7 SDM630-2T V3: V1.8 SDM630M-DI V3: V1.9 SDM630-EV: V1.1
<b>Checksum No's.</b>	SDM630Modbus V3: 0x00762C9F SDM630-2T V3: 0x008A04A7 SDM630M-DI V3: 0x007BCB8F
<b>Identification Location</b>	Nameplate & LCD
<b>Bill Of Materials Version 1 No.'s</b>	SDM630-Standard V2.1 SDM630-MT V2.1 SDM630-MODBUS V2.1 SDM630-MBUS V2.1 SDM630-Pulse V2.1
<b>Bill Of Materials Version 2 No.'s</b>	SDM630Modbus: DH-JS-170020-1.5 SDM630-Standard: DH-JS-170021-1.5 SDM630-MT: DH-JS-170022-1.5 SDM630-Pulse: DH-JS-170023-1.5 SDM630-Mbus: DH-JS-170024-1.5 SDM630 WiFi: DH-JS-210007 V1.0
<b>Bill Of Materials Version 3 No.'s</b>	SDM630-Modbus V3: DH-JS-190022-1.0 SDM630-2T V3: DH-JS-190036-1.0 SDM630M-DI V3: DH-JS-210024-1.0 SDM630-EV: DH-JS-210024-1.0 SDM630-EV: DH-JS-220072 V1.0




EU-Type Examination Certificate Number:

**0120/SGS0151**

Issue Number: 3

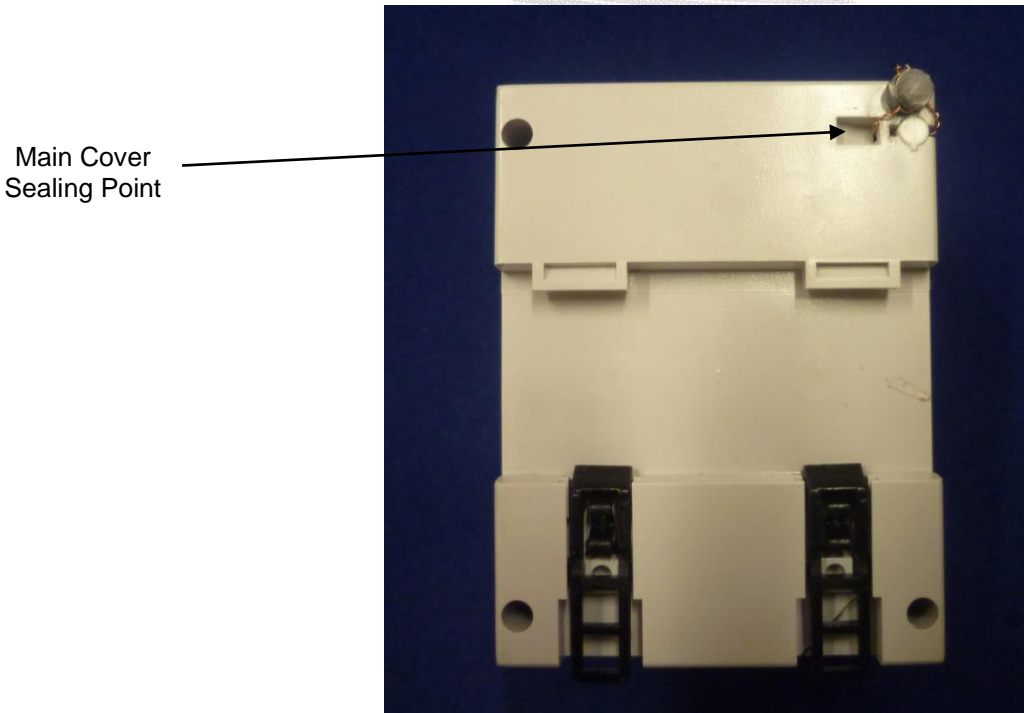
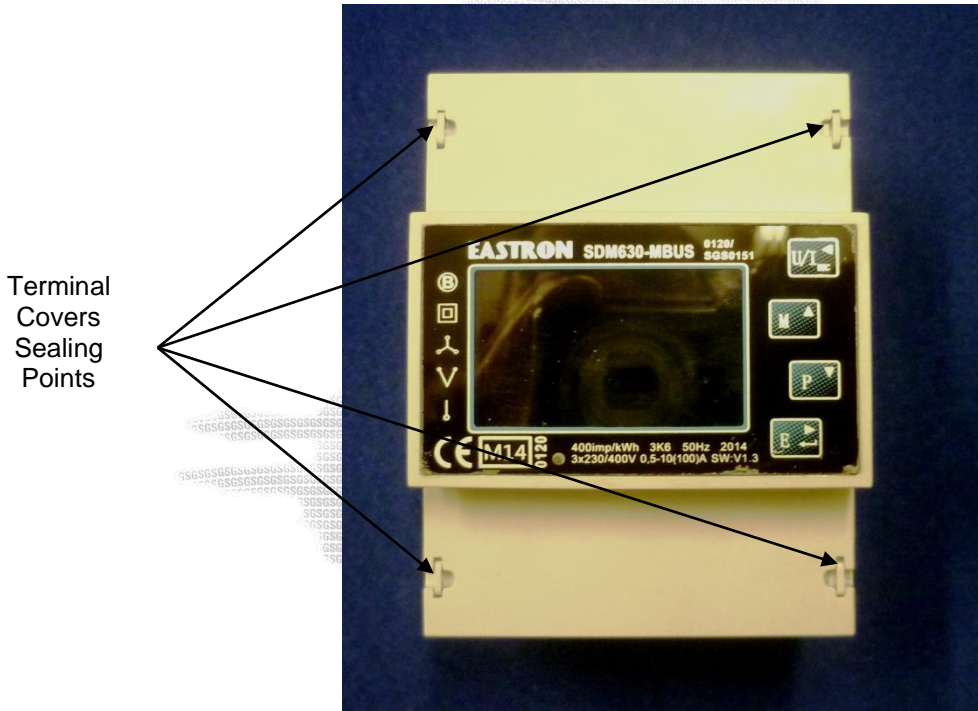
Dated: 21<sup>st</sup> July 2022

<b>IP Rating</b>	IP51. Must be intalled in an IP rated enclosure
<b>Insulation Protective Class</b>	Class II
<b>LED Pulse Constant</b>	400imp/ kWh
<b>Impulse Voltage Rating</b>	6kV
<b>AC Voltage Rating</b>	4kV
<b>Main Cover Sealing Type</b>	Plastic plug
<b>Integrity of meter</b>	Inaccessible without breaking seals
<b>Intended Location of the Meter</b>	Indoor
<b>Type of Register</b>	LCD
<b>Location of Distributors Name and Address</b>	On accompanying documentation

	EU-Type Examination Certificate Number:	
	0120/SGS0151	
	Issue Number: 3	Dated: 21 <sup>st</sup> July 2022

**2. Photograph of Meter and Sealing Plan**

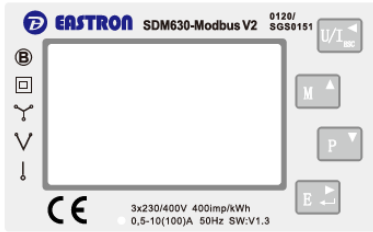
**Photographs of Original Meter Casing – SDM630 V1**



**Photograph of Redesigned Meter Case – SDM 630 V2**

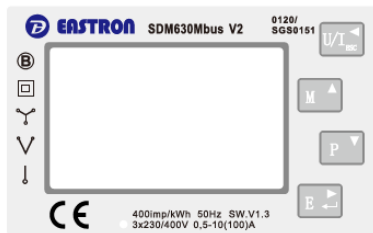


**3. Examples of Nameplates**



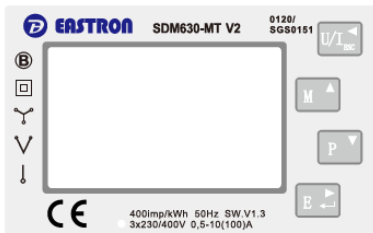
**EASTRON**  
**SDM630-Modbus V2 0120/SGS0151**  
**Three Phase Energy Meter**  
 3x230/400V AC 0,5-10(100)AAC 50Hz 2022  
 400imp/kWh EN50470-1/3 IP51 SW:1.3 CAT III  
 CE M22 3K6  
 Manufactured by Zhejiang Eastron Electronic Co., Ltd.  
 No.1369.Chengnan Rd. Jiaxing, Zhejiang, China

**EASTRON**  
**SDM630-Modbus V2 0120/SGS0151**  
**Three Phase Energy Meter**  
 3x230/400V AC 0,5-10(100)AAC 50Hz 2022  
 400imp/kWh EN50470-1/3 IP51 SW:1.3 CAT III  
 CE M22 3K7  
 Manufactured by Zhejiang Eastron Electronic Co., Ltd.  
 No.1369.Chengnan Rd. Jiaxing, Zhejiang, China



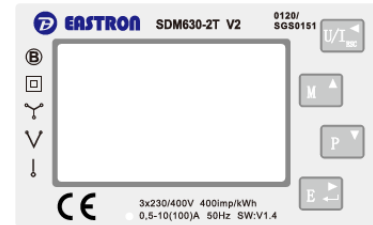
**EASTRON**  
**SDM630Mbus V2 0120/SGS0151**  
**Three Phase Energy Meter**  
 3x230/400V AC 0,5-10(100)AAC 50Hz 2022  
 400imp/kWh EN50470-1/3 IP51 SW:1.3 CAT III  
 CE M22 3K6  
 Manufactured by Zhejiang Eastron Electronic Co., Ltd.  
 No.1369.Chengnan Rd. Jiaxing, Zhejiang, China

**EASTRON**  
**SDM630Mbus V2 0120/SGS0151**  
**Three Phase Energy Meter**  
 3x230/400V AC 0,5-10(100)AAC 50Hz 2022  
 400imp/kWh EN50470-1/3 IP51 SW:1.3 CAT III  
 CE M22 3K7  
 Manufactured by Zhejiang Eastron Electronic Co., Ltd.  
 No.1369.Chengnan Rd. Jiaxing, Zhejiang, China



**EASTRON**  
**SDM630-MT V2 0120/SGS0151**  
**Three Phase Energy Meter**  
 3x230/400V AC 0,5-10(100)AAC 50Hz 2022  
 400imp/kWh EN50470-1/3 IP51 SW:1.3 CAT III  
 CE M22 3K6  
 Manufactured by Zhejiang Eastron Electronic Co., Ltd.  
 No.1369.Chengnan Rd. Jiaxing, Zhejiang, China

**EASTRON**  
**SDM630-MT V2 0120/SGS0151**  
**Three Phase Energy Meter**  
 3x230/400V AC 0,5-10(100)AAC 50Hz 2022  
 400imp/kWh EN50470-1/3 IP51 SW:1.3 CAT III  
 CE M22 3K7  
 Manufactured by Zhejiang Eastron Electronic Co., Ltd.  
 No.1369.Chengnan Rd. Jiaxing, Zhejiang, China



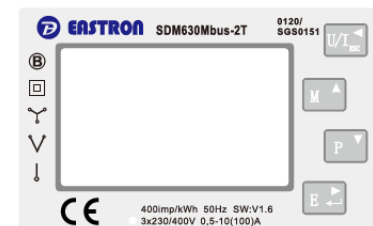
**EASTRON**  
**SDM630-2T V2 0120/SGS0151**  
**Three Phase Energy Meter**  
 3x230/400V AC 0,5-10(100)AAC 50Hz 2022  
 400imp/kWh EN50470-1/3 IP51 SW:1.4 CAT III  
 CE M22 3K6  
 Manufactured by Zhejiang Eastron Electronic Co., Ltd.  
 No.1369.Chengnan Rd. Jiaxing, Zhejiang, China

**EASTRON**  
**SDM630-2T V2 0120/SGS0151**  
**Three Phase Energy Meter**  
 3x230/400V AC 0,5-10(100)AAC 50Hz 2022  
 400imp/kWh EN50470-1/3 IP51 SW:1.4 CAT III  
 CE M22 3K7  
 Manufactured by Zhejiang Eastron Electronic Co., Ltd.  
 No.1369.Chengnan Rd. Jiaxing, Zhejiang, China



**EASTRON**  
**SDM630-Pulse V2 0120/SGS0151**  
**Three Phase Energy Meter**  
 3x230/400V AC 0,5-10(100)AAC 50Hz 2022  
 400imp/kWh EN50470-1/3 IP51 SW:1.3 CAT III  
 CE M22 3K6  
 Manufactured by Zhejiang Eastron Electronic Co., Ltd.  
 No.1369.Chengnan Rd. Jiaxing, Zhejiang, China

**EASTRON**  
**SDM630-Pulse V2 0120/SGS0151**  
**Three Phase Energy Meter**  
 3x230/400V AC 0,5-10(100)AAC 50Hz 2022  
 400imp/kWh EN50470-1/3 IP51 SW:1.3 CAT III  
 CE M22 3K7  
 Manufactured by Zhejiang Eastron Electronic Co., Ltd.  
 No.1369.Chengnan Rd. Jiaxing, Zhejiang, China



**EASTRON**  
**SDM630-Mbus-2T 0120/SGS0151**  
**Three Phase Energy Meter**  
 3x230/400V AC 0,5-10(100)AAC 50Hz 2022  
 400imp/kWh EN50470-1/3 IP51 SW:1.6 CAT III  
 CE M22 3K6  
 Manufactured by Zhejiang Eastron Electronic Co., Ltd.  
 No.1369.Chengnan Rd. Jiaxing, Zhejiang, China

**EASTRON**  
**SDM630-Mbus-2T 0120/SGS0151**  
**Three Phase Energy Meter**  
 3x230/400V AC 0,5-10(100)AAC 50Hz 2022  
 400imp/kWh EN50470-1/3 IP51 SW:1.6 CAT III  
 CE M22 3K7  
 Manufactured by Zhejiang Eastron Electronic Co., Ltd.  
 No.1369.Chengnan Rd. Jiaxing, Zhejiang, China

# SGS

## EU-Type Examination Certificate Number:

# 0120/SGS0151

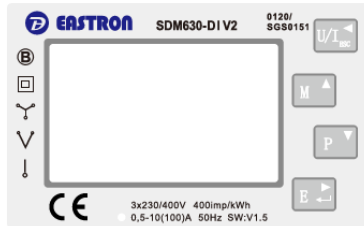
Issue Number: 3

Dated: 21<sup>st</sup> July 2022



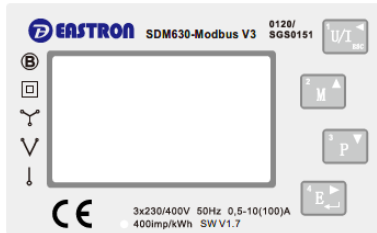
**EASTRON**  
SDM630Standard V2 0120/SGS0151  
**Three Phase Energy Meter**  
3x230/400V AC 0,5-10(100)AAC 50Hz 2022  
400imp/kWh EN50470-1/3 IP51 SW:1.3 CAT III  
**CE M22** **3K6**  
Manufactured by Zhejiang Eastron Electronic Co., Ltd.  
No.1369.Chengnan Rd. Jiaxing, Zhejiang, China

**EASTRON**  
SDM630Standard V2 0120/SGS0151  
**Three Phase Energy Meter**  
3x230/400V AC 0,5-10(100)AAC 50Hz 2022  
400imp/kWh EN50470-1/3 IP51 SW:1.3 CAT III  
**CE M22** **3K7**  
Manufactured by Zhejiang Eastron Electronic Co., Ltd.  
No.1369.Chengnan Rd. Jiaxing, Zhejiang, China



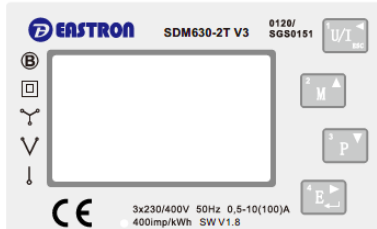
**EASTRON**  
SDM630-DI V2 0120/SGS0151  
**Three Phase Energy Meter**  
3x230/400V AC 0,5-10(100)AAC 50Hz 2022  
400imp/kWh EN50470-1/3 IP51 SW:1.5 CAT III  
**CE M22** **3K6**  
Manufactured by Zhejiang Eastron Electronic Co., Ltd.  
No.1369.Chengnan Rd. Jiaxing, Zhejiang, China

**EASTRON**  
SDM630-DI V2 0120/SGS0151  
**Three Phase Energy Meter**  
3x230/400V AC 0,5-10(100)AAC 50Hz 2022  
400imp/kWh EN50470-1/3 IP51 SW:1.5 CAT III  
**CE M22** **3K7**  
Manufactured by Zhejiang Eastron Electronic Co., Ltd.  
No.1369.Chengnan Rd. Jiaxing, Zhejiang, China



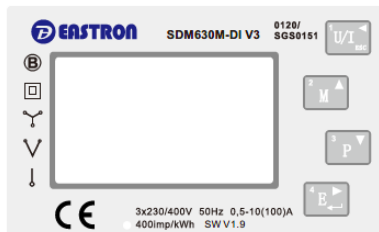
**EASTRON**  
SDM630-Modbus-V3 0120/SGS0151  
**Three Phase Energy Meter**  
3x230/400V AC 0,5-10(100)AAC 50Hz 2021  
400imp/kWh EN50470-1/3 IP51 SW:V1.7 CAT III  
**CE M21** **3K6**  
Manufactured by Zhejiang Eastron Electronic Co., Ltd.  
No.1369.Chengnan Rd. Jiaxing, Zhejiang, China

**EASTRON**  
SDM630-Modbus-V3 0120/SGS0151  
**Three Phase Energy Meter**  
3x230/400V AC 0,5-10(100)AAC 50Hz 2021  
400imp/kWh EN50470-1/3 IP51 SW:V1.7 CAT III  
**CE M21** **3K7**  
Manufactured by Zhejiang Eastron Electronic Co., Ltd.  
No.1369.Chengnan Rd. Jiaxing, Zhejiang, China



**EASTRON**  
SDM630-2T-V3 0120/SGS0151  
**Three Phase Energy Meter**  
3x230/400V AC 0,5-10(100)AAC 50Hz 2021  
400imp/kWh EN50470-1/3 IP51 SW:V1.8 CAT III  
**CE M21** **3K6**  
Manufactured by Zhejiang Eastron Electronic Co., Ltd.  
No.1369.Chengnan Rd. Jiaxing, Zhejiang, China

**EASTRON**  
SDM630-2T-V3 0120/SGS0151  
**Three Phase Energy Meter**  
3x230/400V AC 0,5-10(100)AAC 50Hz 2021  
400imp/kWh EN50470-1/3 IP51 SW:V1.8 CAT III  
**CE M21** **3K7**  
Manufactured by Zhejiang Eastron Electronic Co., Ltd.  
No.1369.Chengnan Rd. Jiaxing, Zhejiang, China



**EASTRON**  
SDM630M-DI-V3 0120/SGS0151  
**Three Phase Energy Meter**  
3x230/400V AC 0,5-10(100)AAC 50Hz 2021  
400imp/kWh EN50470-1/3 IP51 SW:V1.9 CAT III  
**CE M21** **3K6**  
Manufactured by Zhejiang Eastron Electronic Co., Ltd.  
No.1369.Chengnan Rd. Jiaxing, Zhejiang, China

**EASTRON**  
SDM630M-DI-V3 0120/SGS0151  
**Three Phase Energy Meter**  
3x230/400V AC 0,5-10(100)AAC 50Hz 2021  
400imp/kWh EN50470-1/3 IP51 SW:V1.9 CAT III  
**CE M21** **3K7**  
Manufactured by Zhejiang Eastron Electronic Co., Ltd.  
No.1369.Chengnan Rd. Jiaxing, Zhejiang, China

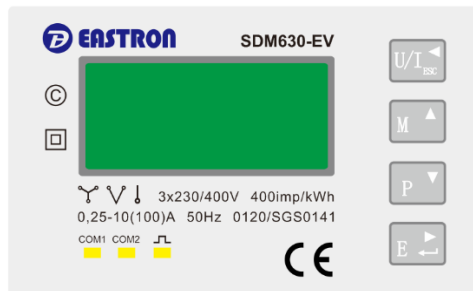
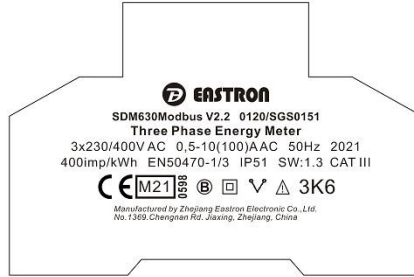
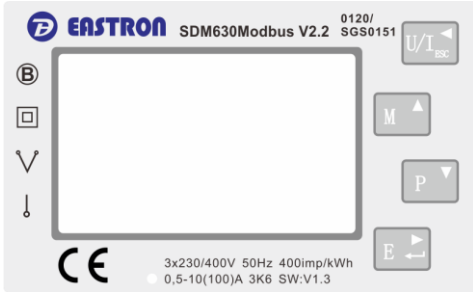
# SGS

## EU-Type Examination Certificate Number:

# 0120/SGS0151

Issue Number: 3

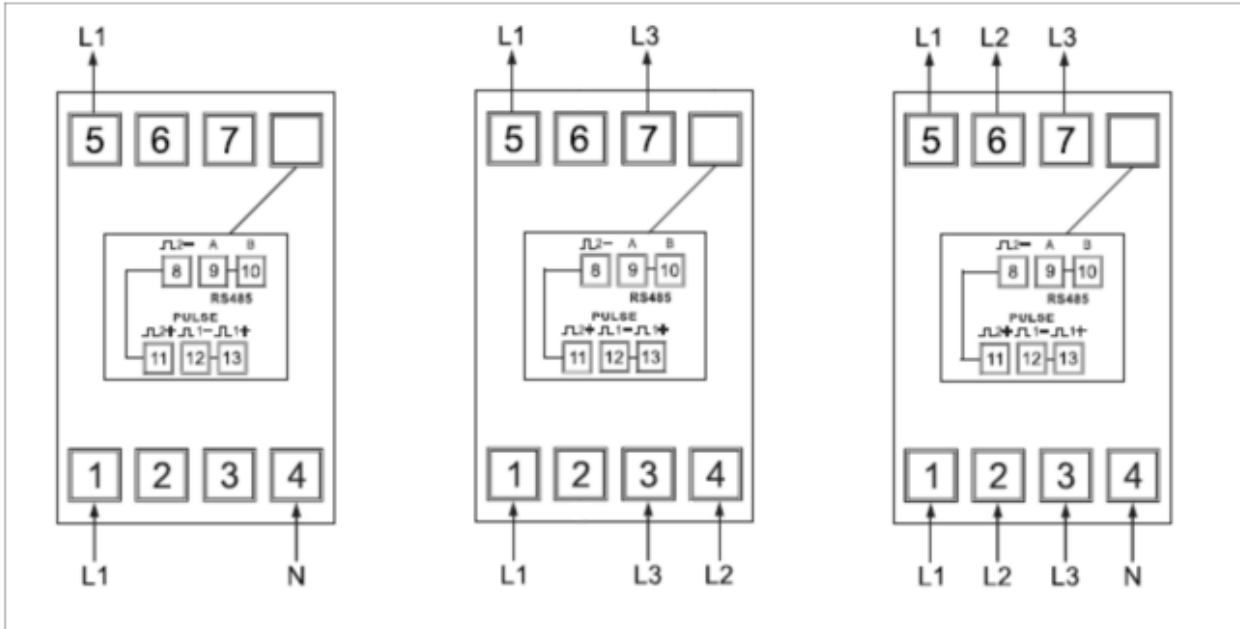
Dated: 21<sup>st</sup> July 2022



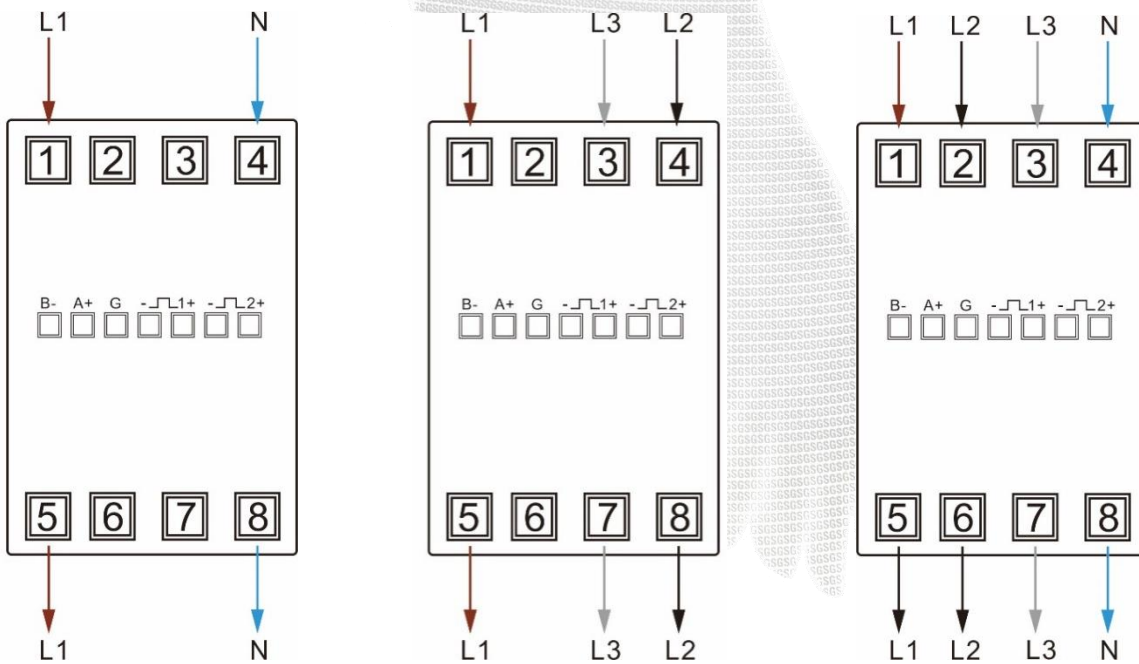


**4. Wiring Diagrams**

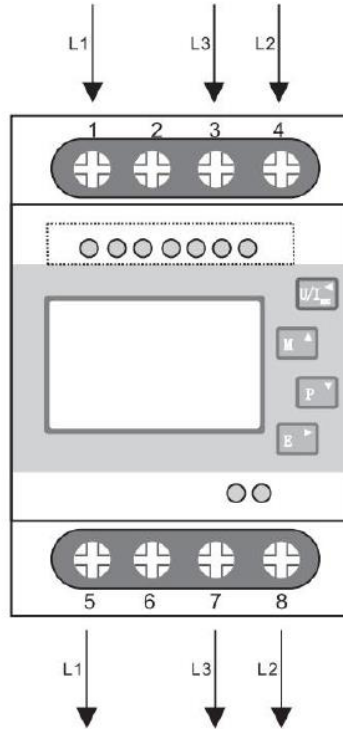
**SDM 630 V1 Wiring Diagram**



**SDM 630 V2 & V3 Wiring Diagram**



**SDM 630 V2.2 Wiring Diagram**



**5. Calculation of the composite error/ MPE**

During the type approval examination the influence factors for temperature, frequency and voltage are determined per load point. The table below represents the sum of the square values per load, determined via the following formula:-

$$\delta e(T, U, f) = \sqrt{(\delta e^2(T, I, \cos\phi) + \delta e^2(U, I, \cos\phi) + \delta e^2(f, I, \cos\phi))}$$

where

$\delta e(T, I, \cos\phi)$  = Additional error due to variation of the temperature at the same load

$\delta e(U, I, \cos\phi)$  = Additional error due to variation of the voltage at the same load

$\delta e(f, I, \cos\phi)$  = Additional error due to variation of the frequency at the same load

		Influence Factors for Temperature. Frequency & Voltage							
Current	PF Cos	-40°C	-25°C	-10°C	5°C	30°C	40°C	55°C	70°C
I <sub>min</sub>	1.0	1.10	0.46	0.34	0.14	0.18	0.29	0.52	0.10
I <sub>tr</sub>	1.0	1.03	0.57	0.39	0.19	0.11	0.24	0.46	0.21
10I <sub>tr</sub>	1.0	0.97	0.64	0.45	0.25	0.06	0.20	0.42	0.29
I <sub>max</sub>	1.0	0.96	0.75	0.60	0.44	0.26	0.23	0.30	0.25
I <sub>tr</sub>	0.5ind	1.08	0.56	0.40	0.20	0.14	0.24	0.49	0.15
10I <sub>tr</sub>	0.5ind	0.89	0.60	0.43	0.23	0.11	0.23	0.45	0.36
I <sub>max</sub>	0.5ind	0.81	0.62	0.47	0.30	0.05	0.10	0.28	0.06
I <sub>tr</sub>	0.8cap	1.06	0.65	0.46	0.27	0.11	0.21	0.43	0.12
10I <sub>tr</sub>	0.8cap	0.93	0.62	0.44	0.24	0.12	0.24	0.46	0.30
I <sub>max</sub>	0.8cap	0.94	0.69	0.55	0.37	0.16	0.14	0.28	0.17
L1									0.00
I <sub>tr</sub>	1.0	0.23	0.84	0.60	0.32	0.08	0.20	0.48	0.18
10I <sub>tr</sub>	1.0	1.19	0.97	0.71	0.46	0.10	0.13	0.36	0.12
I <sub>max</sub>	1.0	1.16	0.93	0.70	0.48	0.16	0.06	0.25	0.24
I <sub>tr</sub>	0.5ind	1.14	0.60	0.32	0.09	0.25	0.42	0.66	0.18
10I <sub>tr</sub>	0.5ind	1.26	0.79	0.56	0.29	0.12	0.27	0.53	0.10
I <sub>max</sub>	0.5ind	1.25	0.84	0.63	0.40	0.10	0.11	0.33	0.25
L2									
I <sub>tr</sub>	1.0	0.93	0.40	0.26	0.09	0.08	0.16	0.37	0.67
10I <sub>tr</sub>	1.0	1.13	0.42	0.31	0.19	0.08	0.17	0.36	0.48
I <sub>max</sub>	1.0	1.09	0.44	0.36	0.25	0.08	0.08	0.23	0.20
I <sub>tr</sub>	0.5ind	0.88	0.20	0.09	0.24	0.27	0.35	0.53	0.78
10I <sub>tr</sub>	0.5ind	1.17	0.43	0.30	0.17	0.10	0.20	0.40	0.51
I <sub>max</sub>	0.5ind	1.20	0.46	0.35	0.25	0.09	0.06	0.20	0.16
L3									
I <sub>tr</sub>	1.0	0.73	0.55	0.37	0.15	0.14	0.30	0.51	0.10
10I <sub>tr</sub>	1.0	0.77	0.51	0.33	0.11	0.20	0.33	0.56	0.04
I <sub>max</sub>	1.0	0.59	0.55	0.39	0.21	0.10	0.21	0.52	0.32
I <sub>tr</sub>	0.5ind	0.30	0.41	0.24	0.06	0.32	0.46	0.66	0.26
10I <sub>tr</sub>	0.5ind	0.41	0.41	0.22	0.04	0.31	0.46	0.67	0.23
I <sub>max</sub>	0.5ind	0.32	0.43	0.30	0.34	0.17	0.30	0.53	0.18



EU-Type Examination Certificate Number:

**0120/SGS0151**

Issue Number: 3


Dated: 21<sup>st</sup> July 2022

## 6. Annex of Variants

Product Variant Identification Details:

Type Designation	Description of meter
SDM630-MT:	Polyphase, multi-function, multi-tariff, 2 pulse outputs and 1 RS485 Modbus communication port
SDM630-Modbus:	Polyphase, multi-function, 2 pulse outputs and 1 RS485 communication port
SDM630-Mbus:	Polyphase, multi-function, 2 pulse outputs and 1 Mbus communication port
SDM630-Pulse:	Polyphase, multi-function, 2 pulse outputs
SDM630-Standard:	Polyphase, 2 pulse outputs and 1 RS485 communication port
SDM630-2T:	Polyphase, multi-function, dual tariffs, 2 pulse outputs and 1 RS485 communication port
SDM630-DI:	Polyphase, multi-function, 1 RS485 Modbus communication port, Digital inputs
SDM630Mbus-2T:	Polyphase, multi-function, dual tariffs, 2 pulse outputs and 1 Mbus communication port
SDM630 M-DI:	Polyphase, multi-function, 1 RS485 Modbus communication port, Digital inputs
SDM630-Modbus V2.2:	Polyphase, Three Wire, multi-function, 2 pulse outputs and 1 RS485 communication port
SDM630 WiFi	Polyphase, multi-function, two pulse outputs and built-in WIFI communication
SDM630-EV	Polyphase, Multi-function, dual Modbus RS485 modbus communication port with built in crypto chip

Modifications to the meter(s) described according to approval No.**0120/SGS0151** must be notified to the issuing body to confirm the meter(s) continuing compliance to the relevant pattern approval standard(s).

	EU-Type Examination Certificate Number:	
	<b>0120/SGS0151</b>	
	Issue Number: 3	Dated: 21 <sup>st</sup> July 2022

## 7. Document Revision History

Issue	Date	Comments
1	06/01/2015	Original Issue
2	21/06/2016	Addition of redesigned meter case with new terminal layout and wiring diagrams. Updated EC Directive to 2014/32/EU
3	24/05/2018	Meter type SDM630-2T added to approval
4	08/05/2019	Additional variants 0.5-10(80)A added to approval
5	07/08/2019	Meter types SDM630-DI and SDM630Mbus-2T added to approval
6	07/05/2021	Temperature range extended to -40°C to +70°C and change of Notified Body reference
7	05/08/2021	Meter types SDM630 Modbus V3, SDM630-2T V3, SDM630M-DI V3, SDM630-Modbus V2.2 added to approval
1	31/08/2021	Issue 1 for SGS Fimko NB 0598 The original approval certificate issued 06/01/2015 The modifications listed above were made prior to the transfer to SGS Fimko
2	29/11/2021	New model SDM630 WiFi added to approval
3	21/07/2022	New model SDM630 EV added to approval

This document is issued by the Company subject to its General Conditions for Certification Services, available on request or accessible at <http://www.sgs.com/en/Terms-and-Conditions.aspx>.

Attention is drawn to the limitation of liability, indemnification and jurisdiction issues defined therein. Any holder of this document is advised that information contained hereon reflects the Company's findings at the time of its intervention only and within the limits of Client's instructions, if any. The Company's sole responsibility is to its Client and this document does not exonerate parties to a transaction from exercising all their rights and obligations under the transaction documents. This document cannot be reproduced except in full, without prior written approval of the Company. Any unauthorized alteration, forgery or falsification of the content or appearance of this document is unlawful and offenders may be prosecuted to the fullest extent of the law.

Unless otherwise stated the results shown in this test report refer only to the sample(s) tested *and such sample(s) are retained for 28 days only.*

**END OF CERTIFICATE**