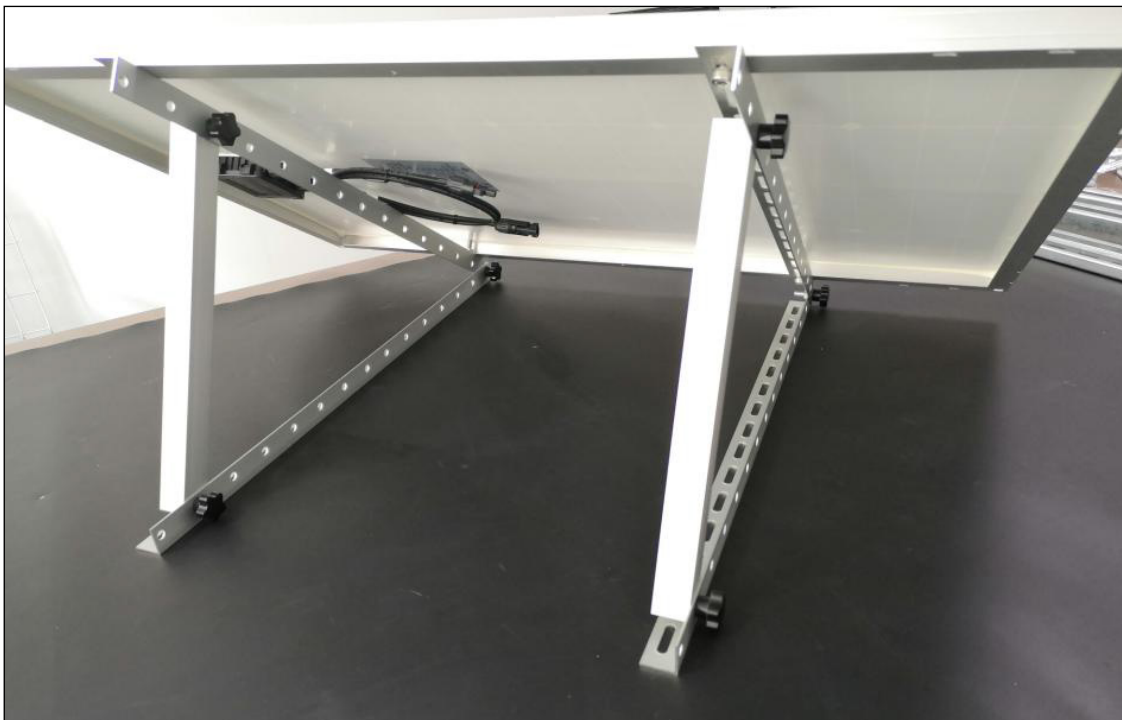
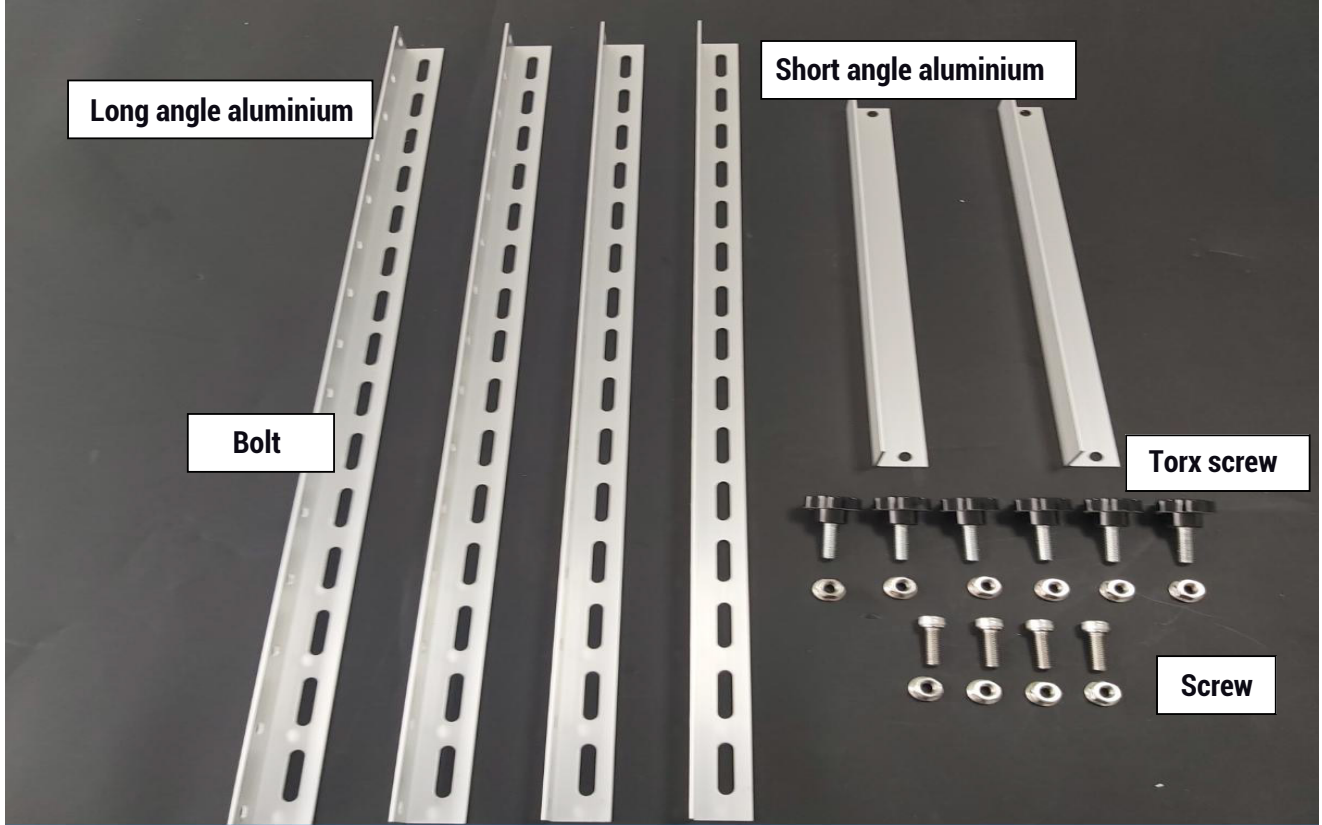


# OPTONICA



## Installation Manual



# Product

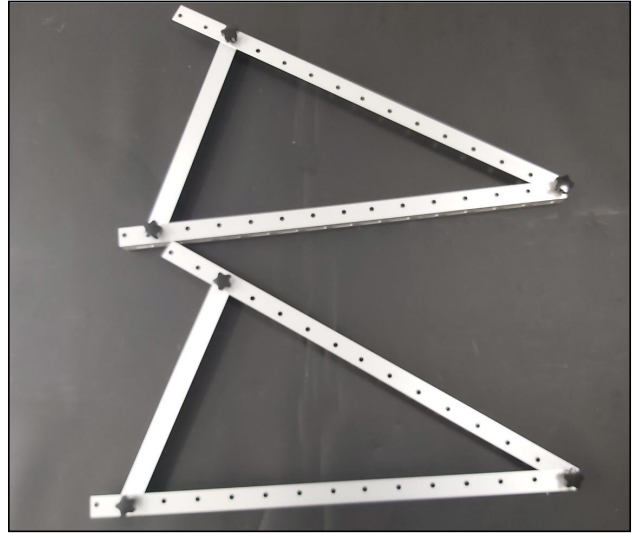
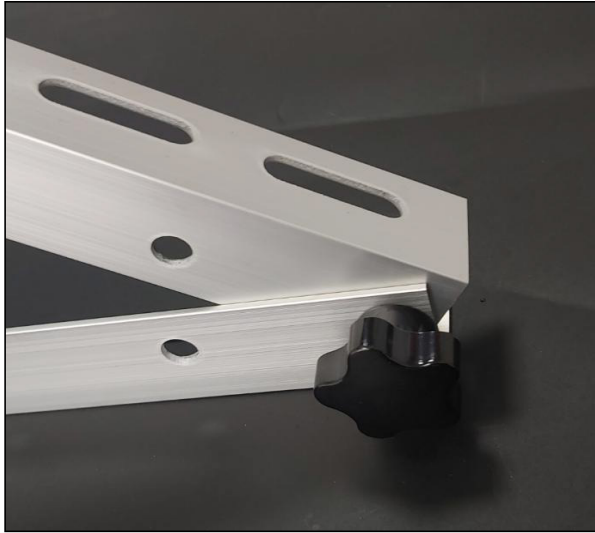


# Tools

Name	Power wrench	Allen wrench
Picture		

# Installation Steps

1. Using the torx screw to fix the long angle aluminium and short angle aluminium as the following picture:



2. Put the solar panel flat in reverse, fix the triangle bracket on the solar panel with screw.



3. Finished the installation.



**IMPORTER: Prima Group 2004 LTD, Bulgaria, 1784 Sofia, Mladost 1, bl. 144, Ground Floor; Phone: +359 2 988 45 72;**